

List of pages in this Trip Kit

Trip Kit Index

Airport Information For EGEC

Terminal Charts For EGEC

Revision Letter For Cycle 21-2020

Change Notices

Notebook

General Information

Location: CAMPBELTOWN GBR
ICAO/IATA: EGED / CAL
Lat/Long: N55° 26.3', W005° 41.3'
Elevation: 42 ft

Airport Use: Public
Daylight Savings: Observed
UTC Conversion: +0:00 = UTC
Magnetic Variation: 2.0° W

Customs: No
Airport Type: IFR
Landing Fee: Yes
Control Tower: No
Jet Start Unit: No
LLWS Alert: No
Beacon: No

Sunrise: 0656 Z
Sunset: 1720 Z

Runway Information

Runway: 11
Length x Width: 5741 ft x 151 ft
Surface Type: asphalt
TDZ-Elev: 30 ft
Lighting: Edge
Displaced Threshold: 499 ft

Runway: 29
Length x Width: 5741 ft x 151 ft
Surface Type: asphalt
TDZ-Elev: 38 ft
Lighting: Edge
Displaced Threshold: 612 ft

Communication Information

Campbeltown Information: 125.905 AFIS

EGEC/CAL

Apt Elev 42'
N55 26.3 W005 41.3

JEPPESEN

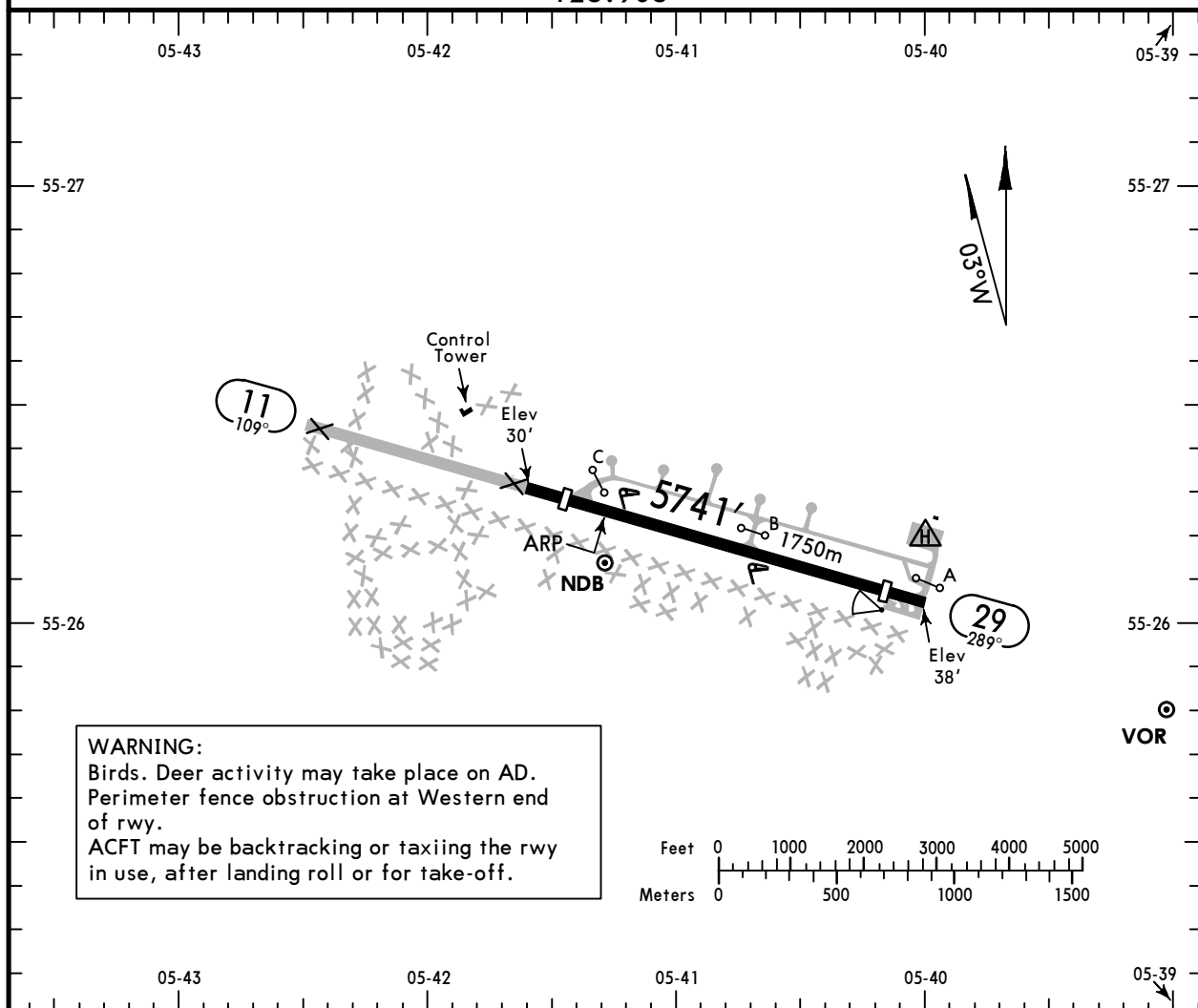
12 OCT 18 (10-9)

CAMPBELTOWN, UK

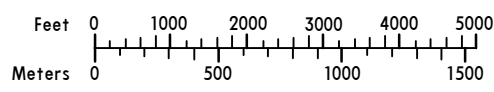
CAMPBELTOWN

*CAMPBELTOWN Information

125.905



WARNING:
Birds. Deer activity may take place on AD.
Perimeter fence obstruction at Western end of rwy.
ACFT may be backtracking or taxiing the rwy in use, after landing roll or for take-off.



ADDITIONAL RUNWAY INFORMATION

RWY		USABLE LENGTHS			WIDTH
		Threshold	Glide Slope	TAKE-OFF	
11	① RL APAPI-L (3.0°)				151'
29	① RL APAPI-L (3.5°)	4921' 1500m			46m

① Portable runway edge lights.

Standard

TAKE-OFF

	Low Visibility Take-off		
	Day: RL & RCLM Night: RL	Day: RL or RCLM Night: RL	Adequate vis ref (Day only)
A			
B			
C	RVR 300m ①	400m	500m
D			

① T/O below 400m available only for authorized Air Operator Certificate holders.

EGEC/CAL
CAMPBELTOWN

JEPPESEN
28 AUG 20 **(12-1)** Eff 10 Sep

CAMPBELTOWN, UK
RNP Rwy 11

*CAMPBELTOWN Information

BRIEFING STRIP™

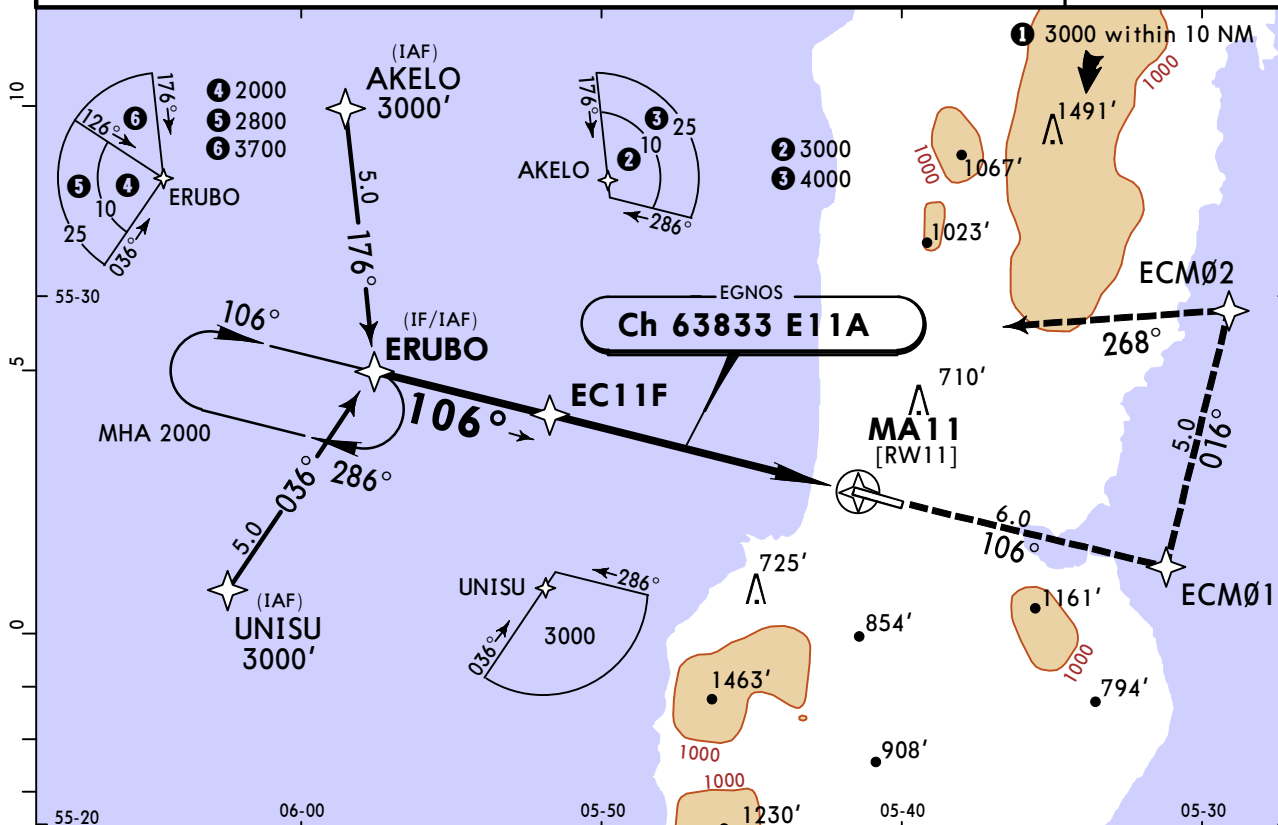
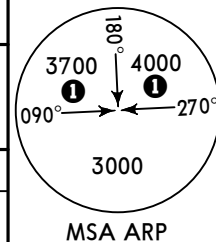
125.905

EGNOS Ch 63833 E11A	Final Apch Crs 106°	EC11F MANDATORY 2000' (1970')	LPV DA(H) 387' (357')	Apt Elev 42' Rwy 30'
--	----------------------------------	---	------------------------------------	-------------------------

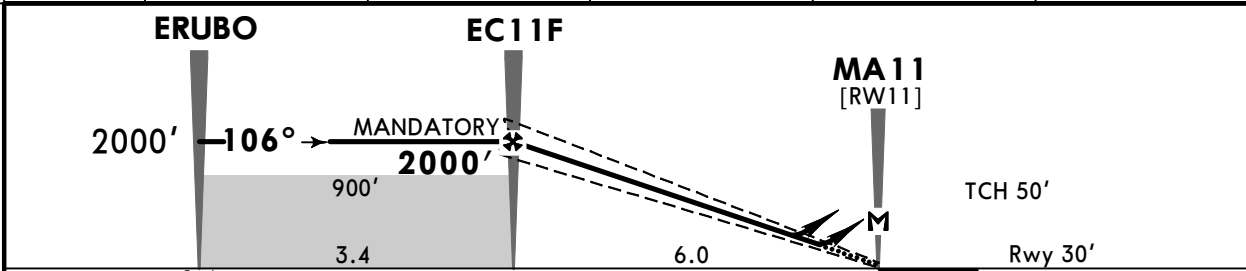
MISSED APCH: Continuous climb to 2000', initially **STRAIGHT AHEAD** to ECMØ1, then turn **LEFT** to ECMØ2, then turn **LEFT** to ERUBO to join the holding. **MAX 185 KT.**

RNP Apch | Alt Set: hPa | Rwy Elev: 1 hPa | Trans level: By ATC | Trans alt: 3000'

1. Procedure restricted to **MAX 210 KT.**
2. Final approach track offset 2° from RCL.
3. Use of RNP is strictly PPR and restricted to Highlands and Islands Airports Ltd approved Operators only.



DIST to MA11	5.0	4.0	3.0	2.0	1.0
ALTITUDE	1690'	1370'	1040'	720'	400'



Gnd speed-Kts	70	90	100	120	140	160	APAPI-L	185 KT	2000'
Glide Path Angle 3.00°	372	478	531	637	743	849			
LPV: MAP at DA									
LNAV: MAP at MA11									

PANS OPS	Standard			STRAIGHT-IN LANDING RWY 11			CIRCLE-TO-LAND Not authorized South of Rwy		
	LPV		LNAV						
			Missed apch climb gradient mim 5.0% up to 1200' CDFA		Missed apch climb gradient mim 2.5% CDFA				
	DA(H) 387' (357')		DA/MDA(H) 450' (420')		DA/MDA(H) 830' (800')				
	A	RVR 1500m	RVR 1500m	RVR 1500m	Max Kts	MDA(H)	VIS		
B				100	890' (848')	1500m			
C				135	1010' (968')	1600m			
D				180	1270' (1228')	2400m			
				205	1660' (1618')	3600m			

EGEC/CAL
CAMPBELTOWN

JEPPESEN
28 AUG 20 **(12-2) Eff 10 Sep**

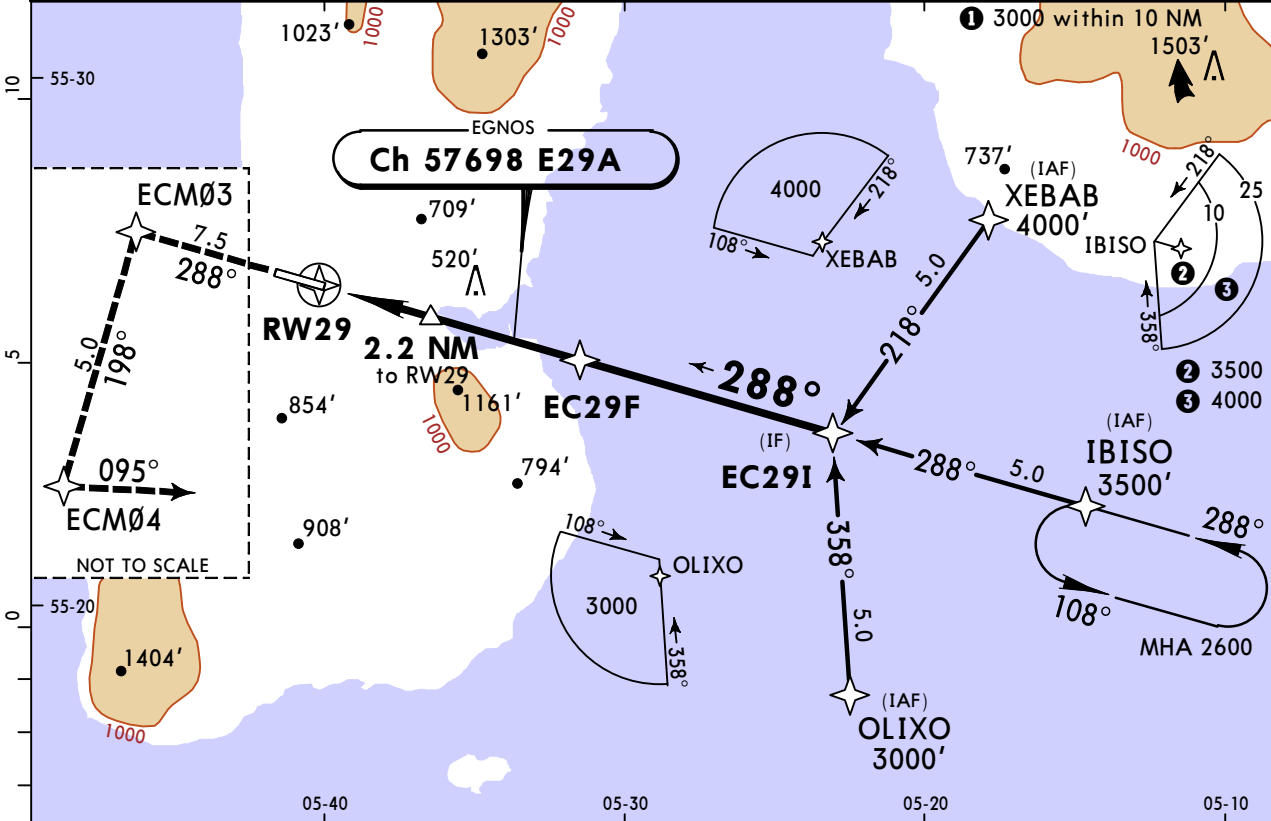
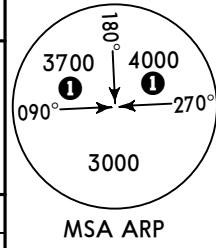
CAMPBELTOWN, UK
RNP Rwy 29

*CAMPBELTOWN Information

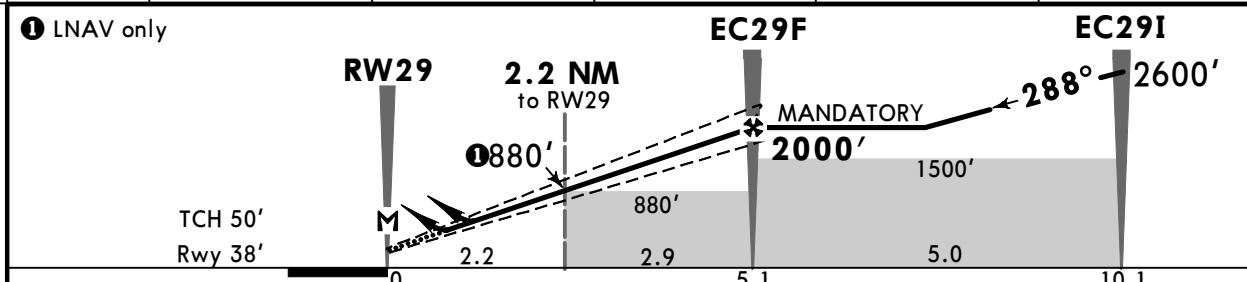
125.905

BRIEFING STRIP™

EGNOS Ch 57698 E29A	Final Apch Crs 288°	EC29F MANDATORY 2000' (1962')	LPV DA(H) 340' (302')	Apt Elev 42' Rwy 38'
MISSED APCH: Continuous climb to 3500', initially STRAIGHT AHEAD to ECM03, then turn LEFT to ECM04, then turn LEFT to IBISO to join the holding. MAX 185 KT.				
RNP Apch	Alt Set: hPa	Rwy Elev: 1 hPa	Trans level: By ATC	Trans alt: 3000'
1. Procedure restricted to MAX 210 KT. 2. Use of RNP is strictly PPR and restricted to Highlands and Islands Airports Ltd approved Operators only.				



DIST to RW29	1.0	2.0	3.0	4.0	5.0
ALTITUDE	460'	830'	1200'	1580'	1950'



Gnd speed-Kts	70	90	100	120	140	160	APAPI-L	185 KT MAX	3500' ↑
Glide Path Angle 3.50°	434	557	619	743	867	991			
LPV: MAP at DA									
LNAV: MAP at RW29									

Standard		STRAIGHT-IN LANDING RWY 29		CIRCLE-TO-LAND Not authorized South of Rwy		
LPV		LNAV		CDFA		
DA(H) 340' (302')		DA/MDA(H) 520' (482')		Max Kts		
A	RVR 1400m	RVR 1500m		100	890' (848')	1500m
B				135	1010' (968')	1600m
C				180	1270' (1228')	2400m
D				205	1660' (1618')	3600m

PANS OPS

Chart changes since cycle 20-2020

ADD = added chart, REV = revised chart, DEL = deleted chart.

ACT	PROCEDURE IDENT	INDEX	REV DATE	EFF DATE
-----	-----------------	-------	----------	----------

CAMPBELTOWN, (CAMPBELTOWN - EGEC)

TERMINAL CHART CHANGE NOTICES

No Chart Change Notices for Airport EGEC

Chart Change Notices for Country GBR

Type: Gen Tmnl

Effectivity: Permanent

Begin Date: Immediately

End Date: No end date

The following Take-off minima according to Commission Regulation No. 965/2012 (EASA Air Operations Regulation) are applicable for Low Visibility Take-off Operations within the UK FIR for CAT ABCD aircraft: 1. With RL and RCLM during day or with RL or CL during night: RVR 300m 2. With RL and CL: RVR 200m 3. With RL and CL and TDZ, MID and RO RVR: RVR 150m 4. With HIRL and CL and TDZ, MID and RO RVR: RVR 125m 5. On CAT III RWYs with approved guidance system or HUD/HUDLS: RVR 75m